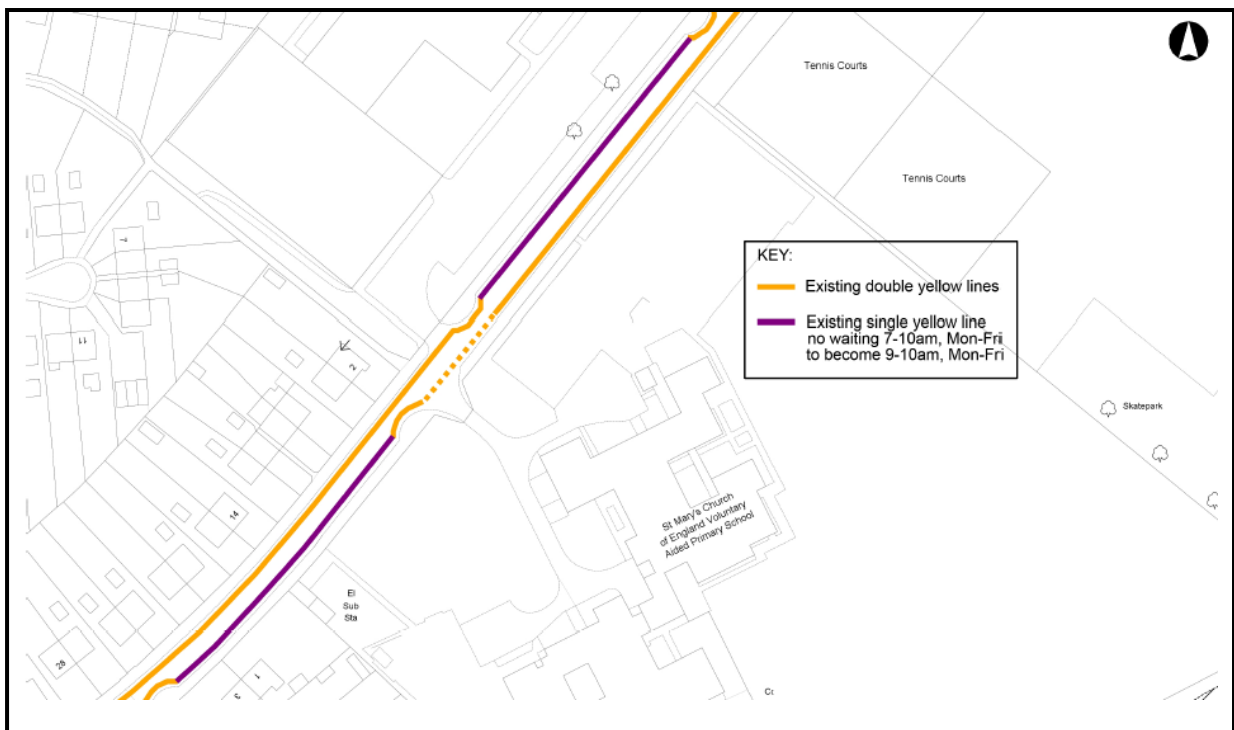
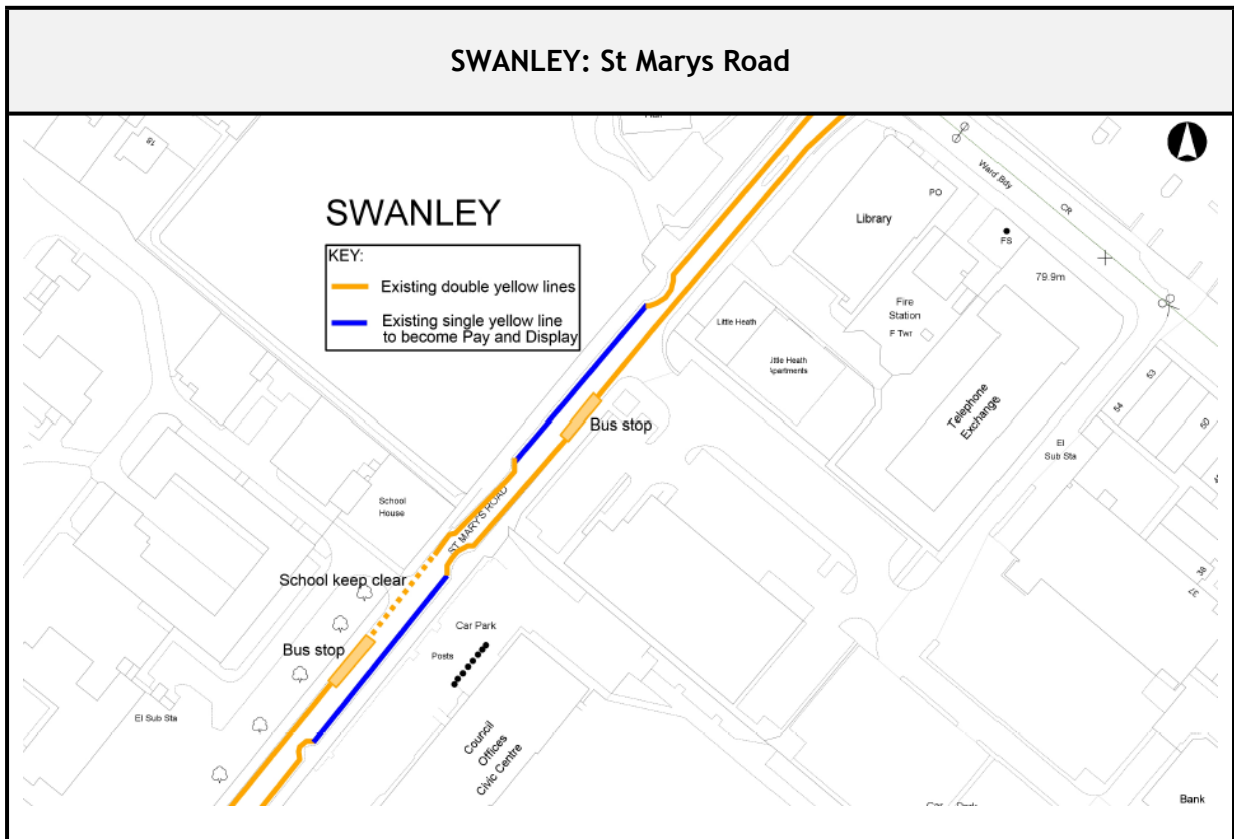


APPENDIX 5b - FOR DECISION

SWANLEY - ST MARYS ROAD - PARKING PROPOSALS

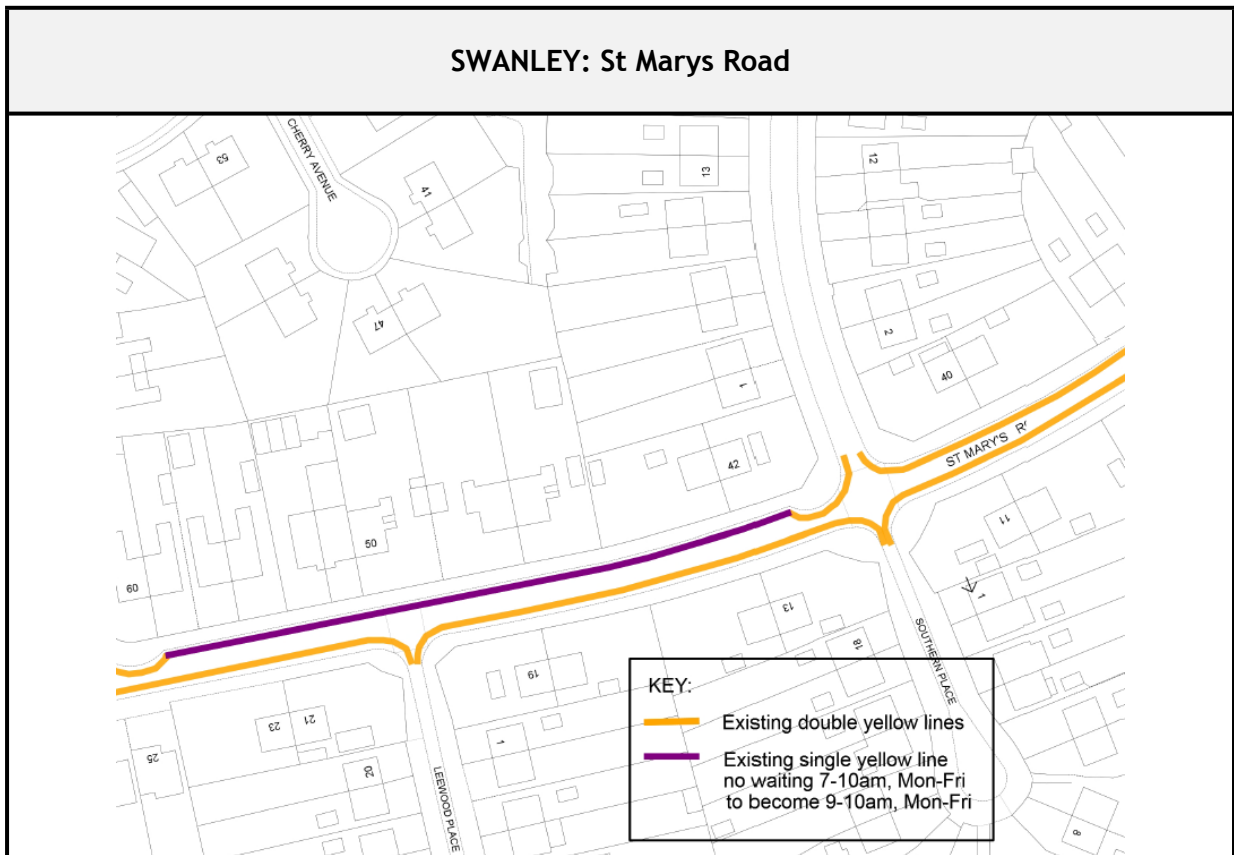
Description and plan of parking proposals, details of objections/comments received and Officers' comments/recommendation



APPENDIX 5b - FOR DECISION

SWANLEY - ST MARYS ROAD - PARKING PROPOSALS

Description and plan of parking proposals, details of objections/comments received and Officers' comments/recommendation



Description	Proposed Changes
<p>St Marys Road Northwest side, from a point 75m south-west of its junction with London Road (B2173), south-westwards for 47m. (Coloured blue on the plan above)</p>	<p>Revoke single yellow line restriction (no waiting Monday - Friday, 7am - 10am) and replace with pay and display/pay by phone parking bay, Monday - Saturday, 8:30am - 6:30pm</p>
<p>St Marys Road Southeast side, from a point 150m south-west of its junction with London Road (B2173), south-westwards for 45m. (Coloured blue on the plan above)</p>	<p>Revoke single yellow line restriction (no waiting Monday - Friday, 7am - 10am) and replace with pay and display/pay by phone parking bay, Monday - Saturday, 8:30am - 6:30pm</p>
<p>St Marys Road Northwest side, from a point 277m south-west of its junction with London Road (B2173), south-westwards for 65m. (Coloured purple on the plan above)</p>	<p>Revoke single yellow line restriction (no waiting Monday - Friday, 7am - 10am) and replace with single yellow line restriction (no waiting Monday - Friday, 9am - 10am)</p>

APPENDIX 5b - FOR DECISION

SWANLEY - ST MARYS ROAD - PARKING PROPOSALS

Description and plan of parking proposals, details of objections/comments received and Officers' comments/recommendation

<p>St Marys Road Northwest side, from a point 12m west of its junction with Hart Dyke Road, westwards for 115m. (Coloured purple on the plan above)</p>	<p>Revoke single yellow line restriction (no waiting Monday - Friday, 7am - 10am) and replace with single yellow line restriction (no waiting Monday - Friday, 9am - 10am)</p>
<p>St Marys Road Southeast side, from a point 90m north-east of its junction with Everest Place, south-westwards for 70m. (Coloured purple on the plan above)</p>	<p>Revoke single yellow line restriction (no waiting Monday - Friday, 7am - 10am) and replace with single yellow line restriction (no waiting Monday - Friday, 9am - 10am)</p>

**APPENDIX 5b - FOR DECISION
SWANLEY - ST MARYS ROAD - PARKING PROPOSALS**

Description and plan of parking proposals, details of objections/comments received
and Officers' comments/recommendation

DETAILS OF OBJECTIONS/COMMENTS RECEIVED	
1	I wish to raise an objection to the proposal of introduction of parking charges at the above site, as I work close to the Town Centre and find this currently free parking area an assets as there are no other free parking spaces close to the place of my employment, introduction of parking charges will have an impact on my personal finances
2	I wish to raise an objection to the proposal of introduction of parking charges at the above site, as I work close to the Town Centre and find this currently free parking area an assets as there are no other free parking spaces close to the place of my employment, introduction of parking charges will have an impact on my personal finances.
3	I wish to raise an objection to the proposal of introduction of parking charges at the above site, as I work close to the Town Centre and find this currently free parking area an assets as there are no other free parking spaces close to the place of my employment, introduction of parking charges will have an impact on my personal finances

OFFICERS' COMMENTS/RECOMMENDATION
<p>COMMENTS:</p> <p>The objections received were from workers at a local business, opposed to the proposal to replace some of the single yellow line restrictions in St Marys Road with pay and display parking bays, on the grounds that there are no other free parking spaces close to their place of work.</p> <p>Although one part of the current proposal is to make the single yellow line (no waiting between 7 and 10am Monday to Friday) restriction in the parking areas in St Marys Road opposite Aldi and outside the Town Council offices pay and display parking bays between 8:30am and 6:30pm from Monday - Saturday, another part is to relax the times of operation of the other sections of single yellow line restrictions in St Marys Road from between 7 and 10am to between 9 and 10am, Monday to Friday.</p> <p>This means that these sections of single yellow line restrictions would remain available to local workers for parking after 10am on weekdays and all day at weekends, albeit that they are slightly further away from the town centre.</p> <p>It is anticipated that the proposed pay and display parking bays will help to support the local economy by ensuring a good turnover of on-street parking spaces.</p> <p>RECOMMENDATION:</p> <p>It is recommended that the objections be set aside, and the proposal be implemented, as drawn.</p>

APPENDIX 5b - FOR DECISION

SWANLEY - ST MARYS ROAD - PARKING PROPOSALS

Description and plan of parking proposals, details of objections/comments received
and Officers' comments/recommendation